

Creating A LUMA SmartPhrase



A Virtual Interactive Educational Program to Empower Patients and Caregivers Managing Severe Asthma

About SmartPhrases:

A SmartPhrase or dotphrase is a tool that allows commonly used chunks of text to easily be inserted into patient notes or discharge instructions by typing a period (the dot) followed by a short user generated phrase.

About LUMA:

LUMA is a free educational program that helps participants to understand underlying causes of asthma and become more active in the management of their own care. Please visit luma-edu.com for resources such as educational videos and information regarding attending live webinar educational events.

User Suggestions:

Suggested SmartPhrase Name: .LUMA or .ASTHMAED

Suggested Text: *(copy and paste text below on this page only)*

To learn more about the underlying causes and the management of asthma, please review the following resources

Asthma Educational Resources: No-cost, internet-accessible asthma educational programs and organizations

LUMA: Learn to Understand and Manage Severe Asthma - Severe asthma educational program with videos and live virtual webinars. <https://www.luma-edu.com>

Allergy & Asthma Network - Asthma and allergy education, advocacy and community outreach programs. <https://allergyasthmanetwork.org/>

Asthma & Allergy Foundation of America - Focused on reducing the burden of disease for people with asthma and allergies through support, advocacy, education and research. <https://www.aafa.org/>

American Lung Association - Advocates for improved lung health and has a focus on preventing lung disease through education, advocacy, and research. <https://www.lung.org/>

Creating A LUMA SmartPhrase

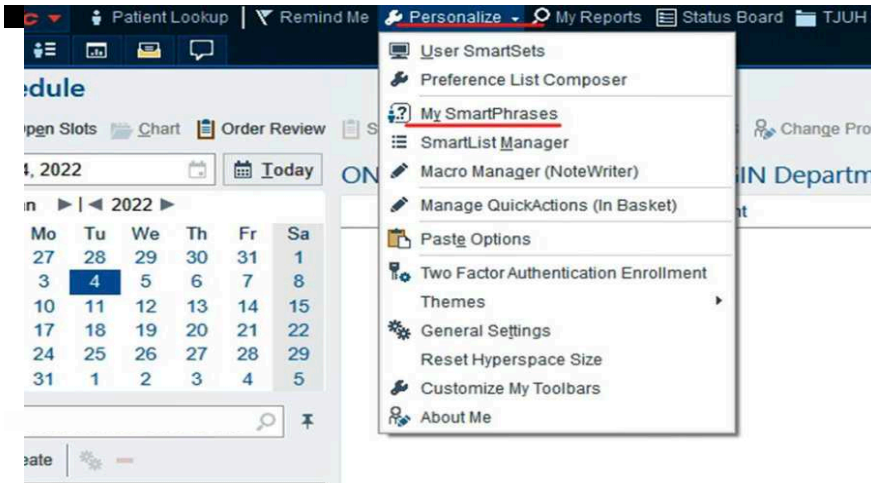


A Virtual Interactive Educational Program to Empower Patients and Caregivers Managing Severe Asthma

How to Create a LUMA SmartPhrase/dotphrase in EPIC

Step 1: In EPIC click on Personalize icon

Step 2: Select My SmartPhrases



Step 3: Click on New User SmartPhrase



Step 4: Copy & paste the instructions in the body area

Step 5: Name it as .LUMA or .ASTHMAED

Creating A LUMA SmartPhrase



LUMA

Learn to Understand and Manage Severe Asthma

A Virtual Interactive Educational Program to Empower Patients and Caregivers Managing Severe Asthma

How to Create a LUMA SmartPhrase/dotphrase in EPIC (continued)

Step 6: Then click SAVE and ACCEPT

SmartPhrase

Do not include PHI or patient-specific data in SmartPhrases.

Copy and Paste the Instructions here!

Settings

Name

Description Populate from Text

Text Format

Rich Text Plain Text

SmartLink Text Size and Font

Match Template Formatting Keep SmartLink Formatting

Synonyms

Synonym

1

Sharing You are an editor Remove Me

User Can Edit?

1

2

Copy Users Mark All as Editors

Create Copy Save Accept Cancel

Step 7: When ready to use, type in .LUMA or .ASTHMAED and press enter, you will see the SmartPhrase with instructions. See below for an example

Abbrev	Expansion
.LUMA or .ASTHMAED	To learn more about the underlying causes and the management of asthma please review the following educational resources...

For Additional Information Please Visit:



luma-edu.com

